

**A range of three-piece, process industry ball valves, certified fire tested to BS 6755 Pt. 2.**

**Features**

- Blow out proof stem.
- Anti-static design.
- Fire test certified.
- Cavity venting in open position.
- Pressure equalisation at upstream seat.
- Precision cast body and ends.
- Carbon or Stainless Steel body and ends.
- Stainless Steel trim (Ball and stem).
- Integral cast travel stops.
- Suitable for actuation via bracket mounting.
- Glass reinforced seats as standard.
- Materials conform to NACE MR0175.
- Screwed ends BSPT or NPT.
- Socket Weld ends to Sch. 10 or Sch. 40.
- Butt weld ends to Sch. 40.



**Application**

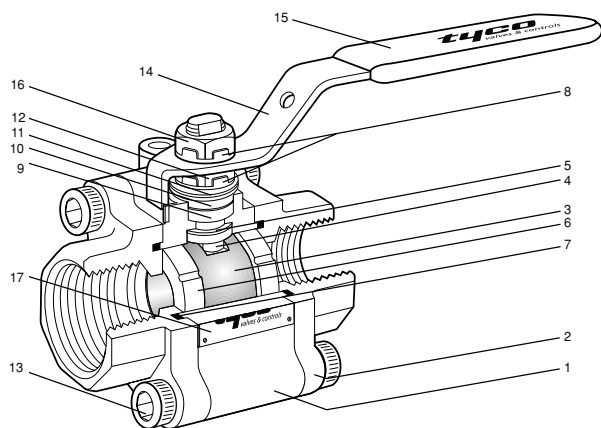
Designed for use in hazardous areas, such as those handling fuel, inflammable gas or chemical applications, where 'fire-tested' and/or anti-static valves are required.

**The Range**

- Sizes : 1/4" to 2" (DN8-50)
- Pressure rating : 100 bar at 40°C
- Seats : Glass Reinforced PTFE
- End connection : Screwed BSPT, NPT  
Socket Weld Sch. 10, Sch. 40  
Butt Weld Sch. 40
- Available materials : Carbon and Stainless Steel

# Tri-Seal Ball Valves

parts identification, materials and dimensions

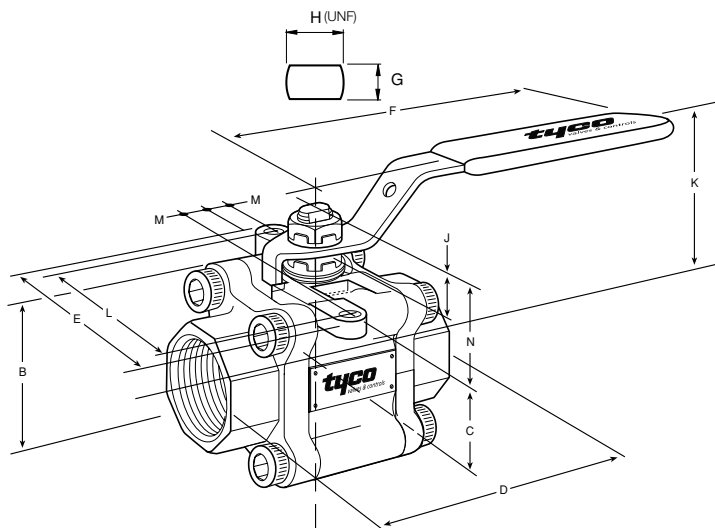


## Parts identification and materials

No	Description	Carbon Steel	Stainless Steel
1	Body	ASTM A216-WCB	ASTM A351 CF8M
2	End Connections	ASTM A216-WCB	ASTM A351 CF8M*
3	Ball	ASTM A276 Gd 316	ASTM A276 Gd 316
4	Stem	ASTM A276 Gd 316	ASTM A276 Gd 316
5	Thrust Washer	GF PTFE (25%)	GF PTFE (25%)
6	Seat	GF PTFE (15%)	GF PTFE (15%)
7	Body Seal	Expanded Graphite	Expanded Graphite
8	Tab Washer	AISI 304	AISI 304
9	Stem Packing	Expanded Graphite	Expanded Graphite
10	Packing Follower	ASTM A276 Gd 316	ASTM A276 Gd 316
11	Disc Spring	AISI 302	AISI 302
12	Lock Nut	ASTM F593-A2	ASTM F593-A2
13	Cap Screws	ASTM F593-A2	ASTM F593-A
14	Lever	AISI 304	AISI 304
15	Lever Sleeve	PVC	PVC
16	Lever Lock Nut	ASTM F593-A2	ASTM F593-A2
17	Nameplate	AISI 304	AISI 304

## Notes

- \*ASTM A351 CF3M for welded ends.
- Certification  
Each valve is covered by works hydrostatic certification.  
Material certification for body components is available to DIN 50049 3.1.B.  
Materials of construction conform to the requirements of NACE MR 01 75.



## Valve dimensions in mm

Size	Port Dia.	B	C	D	E	F	G	H (UNF)	J	K	L	M	N	No. holes	Dia.	Kv	Mass (kg)
8	11	46	27	55	62	114	5.5	5/16	9	48	50	3.75	14	2	6	7	0.4
10	11	46	27	55	62	114	5.5	5/16	9	48	50	3.75	14	2	6	7	0.5
15	11	46	27	63	62	114	5.5	5/16	9	48	50	3.75	14	2	6	7	0.6
20	14	52	31	69	71	114	5.5	5/16	8	55	60	5	13	2	6	10	0.75
25	20.5	61	32	95	84	145	7.5	7/16	13	67	70	9	24	2	6.8	27	1.4
32	25	76	47	110	106	178	8.7	9/16	17	97	90	12.5	31	2	9	70	2.4
40	31.5	76	47	110	106	178	8.7	9/16	17	97	90	12.5	31	2	9	70	3.0
50	37	91	55	122	118	178	8.7	9/16	19	106	100	15	33	2	9	94	4.3

## Pressure/temperature graph

