



Heap &  
Partners Ltd

Multiple Switch Options

Corrosion and Chemical Resistance

Multiple Cable Entries

Aggressively Tested

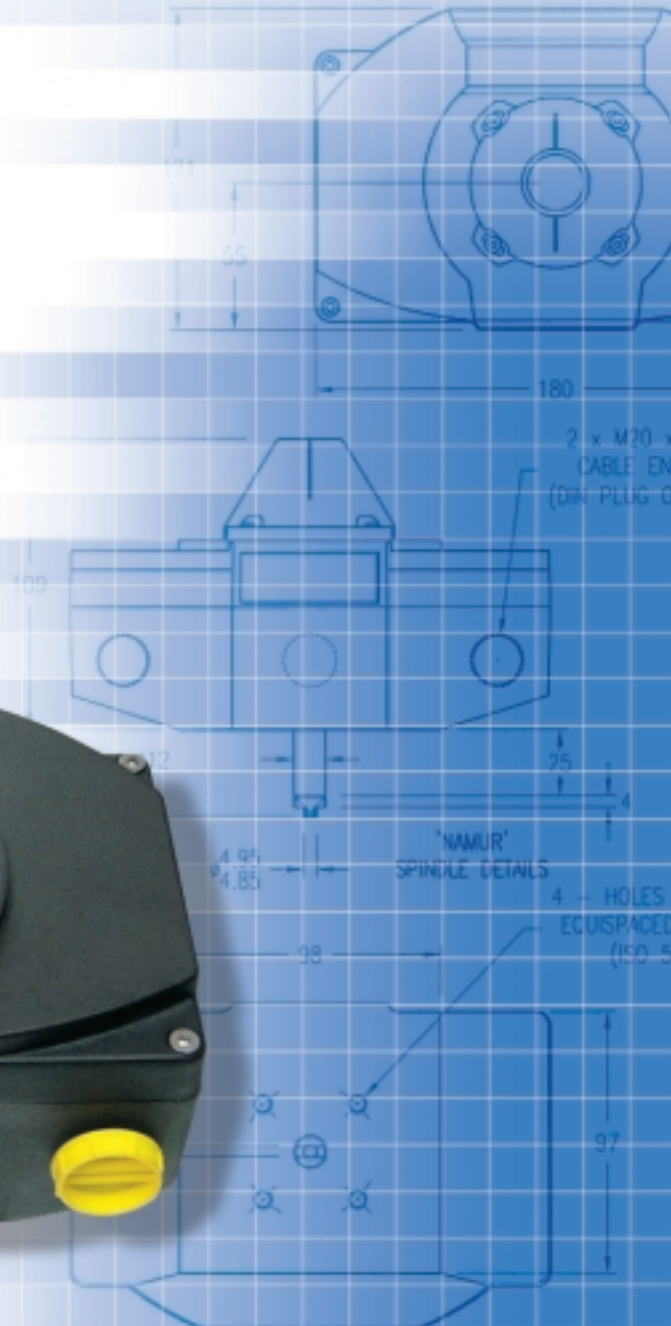
Visual Indicator of Position

Easy to Set Cams

Easy to Upgrade

**Signal**

A High Performance Switchbox





## Benefits

# Signal

A High Performance Switchbox

### Multiple Switch Options

Up to four switches can be fitted from a choice including V3 mechanical, proximity sensor, reed or pneumatic switches.

### Corrosion and Chemical Resistance

Signal has been designed to meet the harshest enviroments with a PPS enclosure, polycarbonate indicator, viton seals and all fittings and fastners in stainless steel.

### Multiple Cable Entries

Signal is available with up to 3 cable entries, either M20 or DIN plug. The external configuration and access to the terminal blocks makes cable termination and backwiring easy.

### Aggressively Tested

The robust enclosure has been subjected to some of the toughest enviromental testing available. The enclosure is IP67 rated (submersible) and has passed a 1000 hour salt spray test. Signal has also been subjected to resonant vibration and temperature cycle testing.

### Visual Indicator of Position

As standard, Signal comes with a high visibility visual indicator.

### Easy to Set Cams

The switches are operated by individual cams. The simple system means quick accurate switch adjustment.

### Easy to Upgrade

Sufficient space has been provided for the addition of upgrade ancillaries such as field network cards.





## Ordering Code

# Signal-022-100

0 = Namur  
1 = H&P  
2 = Special

Spindle

Ancillaries

0 = None  
1 = AST Bus

0 = None  
1 = 1 Switch  
2 = 2 Switches  
3 = 3 Switches  
4 = 4 Switches

No. of Switches

Internal Solenoid

0 = None  
1 = 3/2 24v DC  
2 = 3/2 110v AC  
3 = 3/2 24v DC ExIA  
4 = 5/2 24v DC  
5 = 5/2 110v AC  
6 = 5/2 24v DC ExIA

0 = None  
1 = V3 Microswitch  
2 = V3 Gold Plated  
3 = V3 Sealed  
4 = P&F Sensor  
5 = Reed Switch  
6 = Pneumatic Switch  
7 = Special

Switch Type

Cable Entry

1 = 2 off M20  
2 = 3 off M20  
3 = 1 off DIN Plug & 1 off M20  
4 = 2 off DIN Plug

## Technical Specification

### Electrical Connections

2 off M20 cable entries (Standard)

3 off M20 cable entries

DIN Plug

### Switch Options

2 x V3 SPDT mechanical switches (Standard)

Proximity sensors

Reed switches

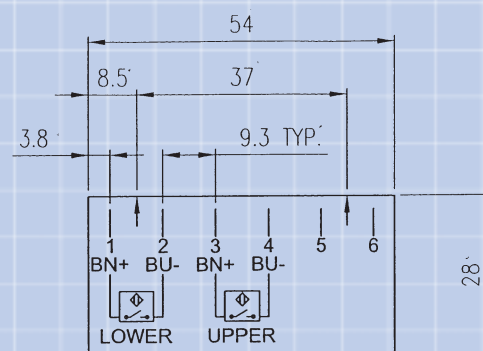
Pneumatic switches

Double banked

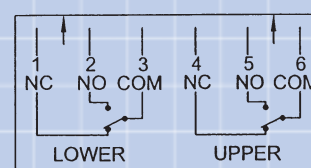
ASI Bus Interface

### Resistive Load Ratings for Standard SPDT Switches

Voltage AC	Voltage DC	Amps
125		15
250		15
	24	10
	250	0.25

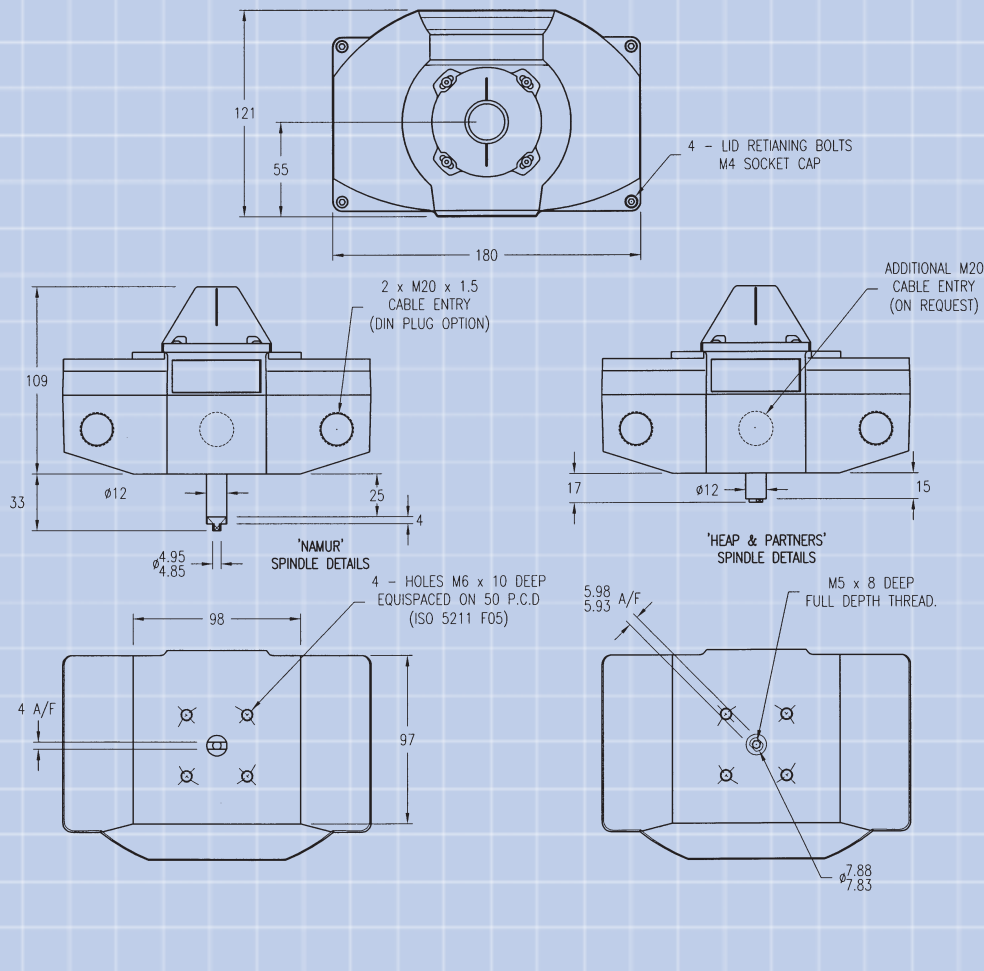


SENSOR LABEL DETAILS  
TEXT:- BLACK 2.5mm HIGH 'ARIAL' FONT



MICRO SWITCH LABEL DETAILS  
TEXT:- BLACK 2.5mm HIGH 'ARIAL' FONT

# Dimensional Data



## Head Office:

Britannia House, Newton Road, Hoylake,  
Wirral, CH47 3DG, United Kingdom.

Tel: +44 (0)151 632 3393 Fax: +44 (0)151 632 4453

Email: [info@heaps.co.uk](mailto:info@heaps.co.uk) Website: [www.heaps.co.uk](http://www.heaps.co.uk)

## Teesside Office:

Empire Buildings, Dukes Way, Teesside Ind. Estate,  
Thornaby, TS17 9LT, United Kingdom.

Tel: +44 (0)1642 750 606 Fax: +44 (0)1642 750 102

## London Office:

9 Royal Victor Place, Old Ford Road

Tower Hamlets, London E3 5SS, United Kingdom.

Tel: +44 (0)20 8983 3333 Fax: +44 (0)20 8983 3336

## Glasgow Office:

219 Pentagon Business Centre

Washington Street, Glasgow, G3 8AZ, United Kingdom.

Tel: +44 (0)141 248 8885 Fax: +44 (0)141 248 8854

## Manchester Office:

Victoria House, Albert Street,

Eccles, Manchester, M30 0NR, United Kingdom.

Tel: +44 (0)161 707 2500 Fax: +44 (0)161 789 1641



Warning: Unauthorised modification to any Heap & Partners product totally invalidates all warranties.

Important: We have endeavoured in this publication to make the content as accurate as possible, but being given as general information, it is not to be taken as binding unless specifically confirmed in writing. Due to Heap & Partners' continuing commitments to engineered produce advancement, the product specification and data presented in this publication are subject to change without notice.