



I Applications

The RV -150 pump is a sanitary helicoidal impeller pump of high capacity that can reach 350 m³/h.

Apart from the standard design, self-priming option is also available, it allows negative suction of liquids with suspended solid particles.

It can be used in the canning industry for pumping solids in suspension in water (corn, peas, mushrooms...) , it also can be used in olive industry (olives, including the Gordal olive, suspended in brine) and it can be used to pump fruit or pieces of fruit.

Solid particles suspended in liquid are pumped, practically, without being damaged.

I Operating principle

The operating principle of the helicoidal impeller pump borrows the characteristics from mixed flow centrifugal pumps. The impeller has only one vane, it is housed inside the pump casing and rotates in conjunction with the shaft, conveying the kinetic and pressure energy to the liquid. Then, in the volute of the casing the transformation of this energy results in the form of pressure.

The vacuum pump operates following the operating principle of the liquid ring pumps.

I Design and features

2-piece casing with volute, manufactured from 8mm cold formed plate

Flange connections DIN-2576

Helicoidal impeller with a single vane of double curvature

Sanitary mechanical seal

Close-coupled pump

IEC B35 motors, IP55, F- class insulation

I Materials

Parts in contact with the media:

AISI-316L

Lantern and the bearing support:

GG-15

Gaskets (standard)

EPDM (FDA)

Mechanical seal (standard)

SiC / C / EPDM

I Options

SiC/SiC seal for abrasive media

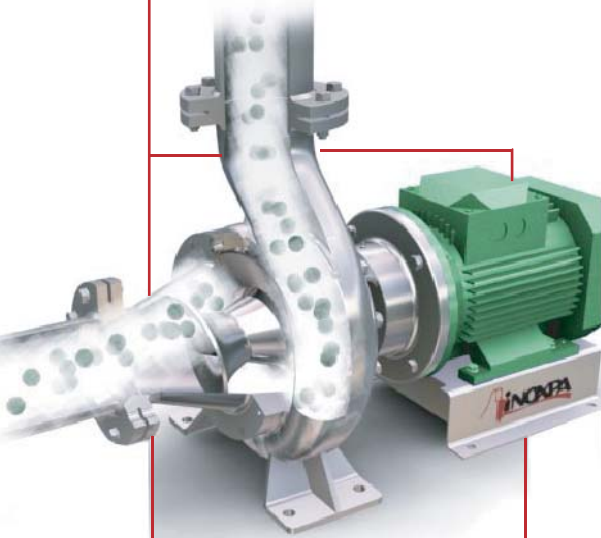
FPM and PTFE gaskets

Connections of other types

Motors of other protection

SP module with the vacuum pump

integrated into the pump

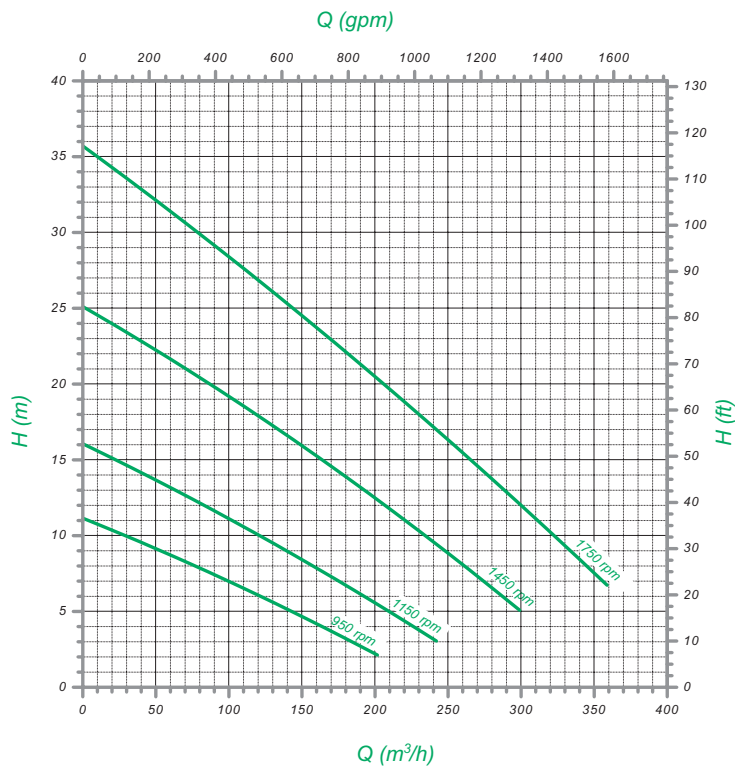
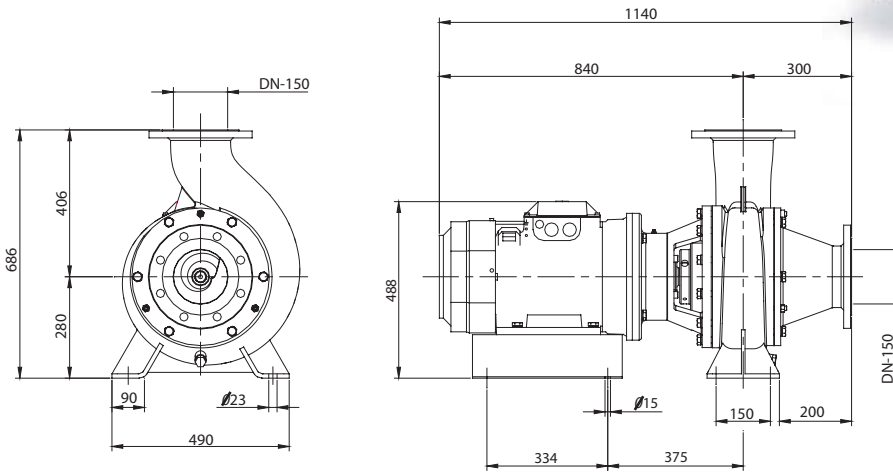
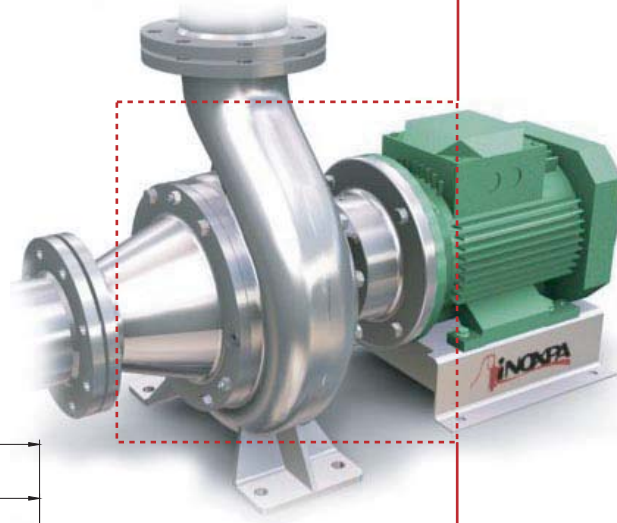


Mirror polished impeller



Technical specifications

	50Hz	60Hz
Max. flow	300 m ³ /h	350 m ³ /h
Max. head	25 m.c.l	35 m.c.l
Max. suction pressure	7.5 bar	7.5 bar
Max. operating pressure	10 bar	10 bar
Max. working temperature	140°C	140°C
Max. speed	1450 min ⁻¹	1750 min ⁻¹



Helicoidal Impeller Pump

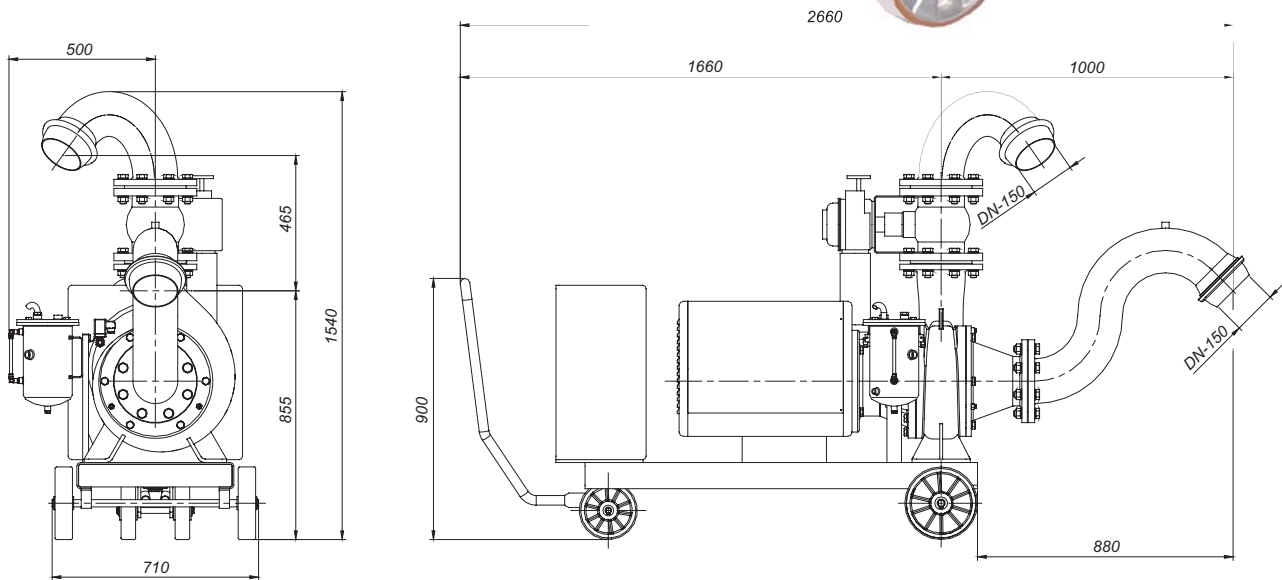
RV-SP

I Application

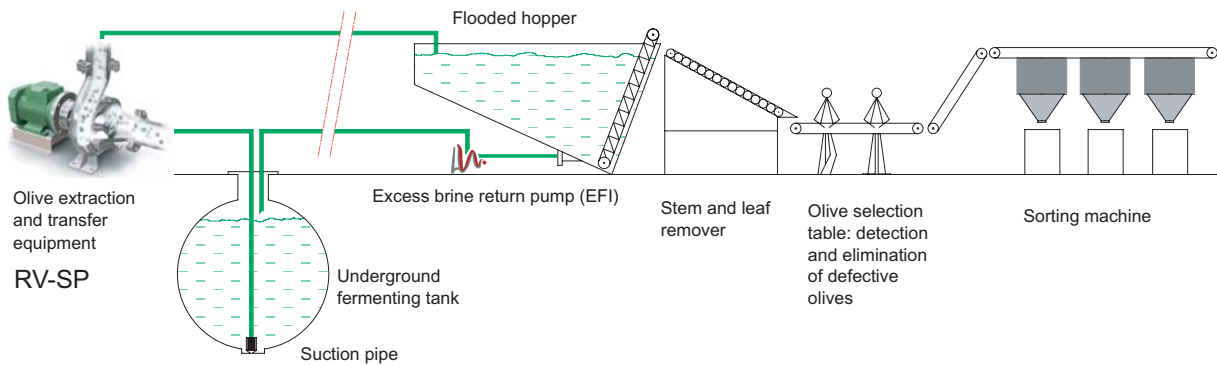
Helicoidal impeller pump to transfer olives,
self-priming capability
Capacity from 40.000 up to 200.000 Kg/h of olives



*Suction / discharge pipes are supplied with the equipment



I Olive industry - Process



The information contained in this brochure is for guidance only. We reserve the right to modify any material or feature without notice in advance.
For further information, please, consult our web site. www.inoxpa.com



FTo.RV.2.EN-0405