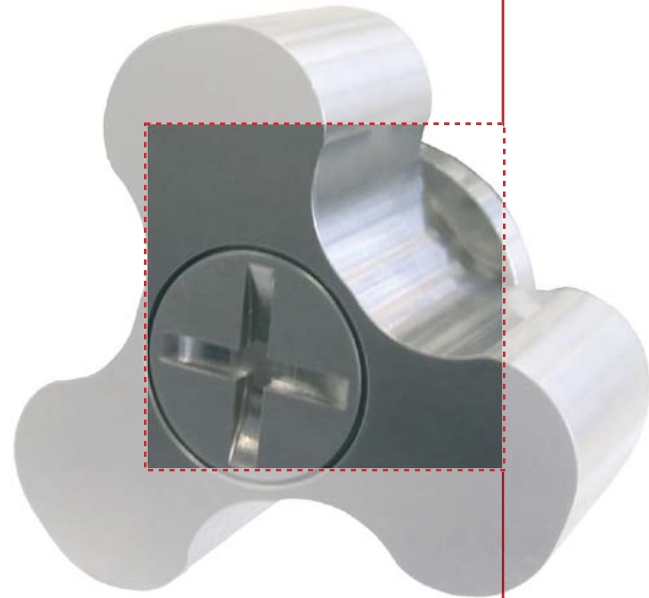


I Options

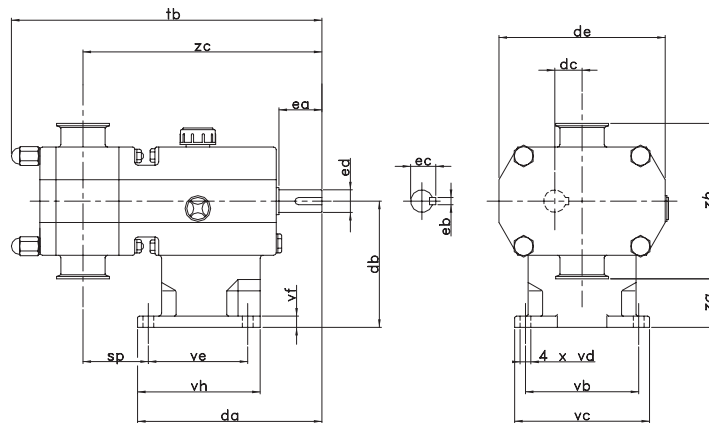
- Mechanical seal: SiC/SiC, TgC/SiC.
- Cooled mechanical seal, double balanced mechanical seal.
- Gaskets: FPM (Viton®) and PTFE.
- Bi-wing lobes.
- Relief valve at the front cover or external by-pass.
- Heating jacket.
- Rectangular inlet.
- Horizontal assembly (no EHEDG certificate)
- Various types of drives and protections (gear motor with frequency converter...)
- Assembly on a 304 stainless steel baseplate on silent-blocks, sanitary design.
- Trolley and control panel.
- Connections: Clamp DIN32676, DIN 11864-2, DIN 11864-1...
- Material certificates (3.1), roughness certificate.
- The pump can be ATEX certified.



I Technical specifications

- Max. flow 115m³/h / 507GPM
- Max. pressure 12bar
- MAX. working temperature 120°C / 248°F
- Max. speed 1450 rpm

I General dimensions



HLR	DN	da	db	dc	de	ea	eb	ec	ed	sp	tb	vb	vc	vd	ve	vf	vh	za	zb	zc
0-20	3/4"	160	80	20	115	30	5	16,2	14	64	261	102	118	9	50	9	65	3	154	216
0-25	1"									67	269									
1-25	1"	165	112	25	160	40	6	21,6	19	61	280	115	135	9	85	10	105	18	188	218
1-40	1 1/2"									67	292									
2-40	1 1/2"	200	140	31	190	50	8	27	24	70	337	125	150	11	105	12	130	33,5	213	261
2-50	2"									75	349									14
3-50	2"	280	190	46,5	250	80	10	41,4	38	87	430	170	210	13	130	14	170	56	268	348
3-80	3"									97	452									14
4-100	4"	433	225	60	333	110	16	58,9	55	88	627	260	345	18	280	6	320	63,5	323	505
4-150	6"									112	677									22

